

OSI 2000/3000/5000/7000 Dual Bed Oxygen Concentrator

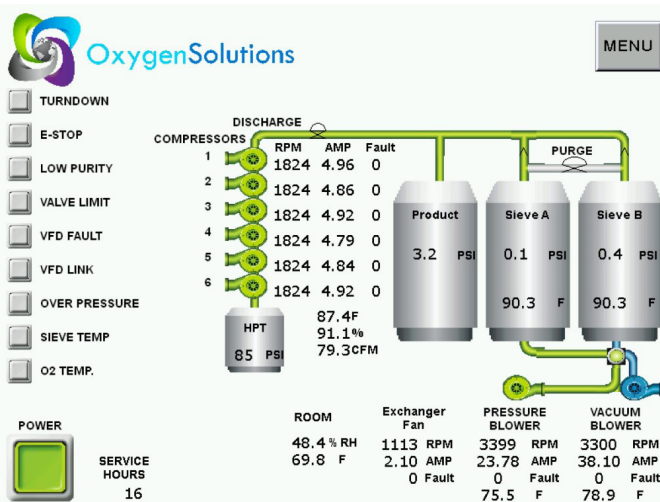
OSI's dual bed, stand-alone, plug-and-play oxygen concentrators are designed to make installation easy and fast. The only machine connections required are power, oxygen and a data/Internet line to the connections on the skid. The oxygen concentrator is housed in a 40' ISO ocean container and is easy to transport from site to site if needed.

Applications

- Supplementing oxygen at net pen sites
- Oxygen supply in remote locations
- Oxygen supply for large hatcheries
- Oxygen supply for RAS systems
- Onsite generation of ozone



OSI 5000



HMI touch screen PLC

All units are fitted with a programmable logic controller (PLC) and a variable frequency drive (VFD) for the main blower motor. This feature gives the highest possible efficiency and also gives a linear power demand on *turn down*. When using 50% of the capacity of the machine, only 50% of the energy is required.

All required maintenance information—oil changes and filter and seal replacements—is displayed on the HMI touch screen. Alarms and faults also appear on the touch screen and can be monitored remotely if an Internet or cell connection is available. Alarms are sent by e-mail and/or cell text message to designated recipients. The touch screen displays all operating conditions, such as pressures and amperage draw, for easy monitoring of the VSA.

One-year remote monitoring and software updates are provided at no additional cost.

Specifications

	OSI 2000	OSI 3000	OSI 5000	OSI 7000
Discharge flow rate	950 Lpm 1,818 kg/day	1,425 Lpm 2,724 kg/day	2,375 Lpm 4,540 kg/day	3,500 Lpm 6,363 kg/day
Oxygen purity	92% ± 2%	92% ± 2%	92% ± 2%	92% ± 2%
Discharge pressure (w/booster compressors)	0.30–0.45 bar 1.40–6.5 bar	0.30–0.45 bar 1.40–6.5 bar	0.30–0.45 bar 1.40–6.5 bar	0.30–0.45 bar 1.40–6.5 bar
Temperature range	4–32 °C	4–32 °C	4–32 °C	4–32 °C
Power options	460 VAC/60 Hz 3Ph 380 VAC/50 Hz 3Ph	460 VAC/60 Hz 3Ph 380 VAC/50 Hz 3Ph	460 VAC/60 Hz 3Ph 380 VAC/50 Hz 3Ph	460 VAC/60 Hz 3Ph 380 VAC/50 Hz 3Ph
Average current draw	104 A/460 VAC/60 Hz @ 6.5 bar 97 A/460 VAC/60 Hz @ 1.4 bar	104 A/460 VAC/60 Hz @ 6.5 bar 97 A/460 VAC/60 Hz @ 1.4 bar	104 A/460 VAC/60 Hz @ 6.5 bar 97 A/460 VAC/60 Hz @ 1.4 bar	120 A/460 VAC/60 Hz @ 6.5 bar 112 A/460 VAC/60 Hz @ 1.4 bar
Maximum current draw	56 A/460 VAC/60 Hz @ 6.5 bar	84 A/460 VAC/60 Hz @ 6.5 bar	115 A/460 VAC/60 Hz @ 6.5 bar	145 A/460 VAC/60 Hz @ 6.5 bar
Average power consumption	38 kW @ 6.5 bar 30 kW @ 0.4 bar	51 kW @ 6.5 bar 40 kW @ 0.4 bar	75 kW @ 6.5 bar 69 kW @ 0.4 bar	91 kW @ 6.5 bar 84 kW @ 0.4 bar
Recommended electrical service	100 A/460 VAC/60 Hz 100 A/380 VAC/50 Hz	100 A/460 VAC/60 Hz 150 A/380 VAC/50 Hz	150 A/460 VAC/60 Hz 200 A/380 VAC/50 Hz	150 A/460 VAC/60 Hz 200 A/380 VAC/50 Hz
Cost of oxygen generation	0.40 kWh/kg @ 6.5 bar	0.34 kWh/kg @ 6.5 bar	0.30 kWh/kg @ 6.5 bar	0.25 kWh/kg @ 6.5 bar
Dry weight, concentrator	~4,100 kg	~5,000 kg	~15,000 kg	~16,500 kg
Oxygen outlet	3/4" NPT	1" NPT	1" NPT	2" NPT
HMI touch screen PLC	7" touch screen display	7" touch screen display	7" touch screen display	7" touch screen display

Contact

OSI Oxygen Solutions Inc.
 1243 70th Ave NW, Edmonton, Alberta, Canada T6P 1N5
 Phone: 1.866.416.0516 (toll free) or 1.780.669.1300
sales@osioxygen.com
www.osioxygen.com